

44

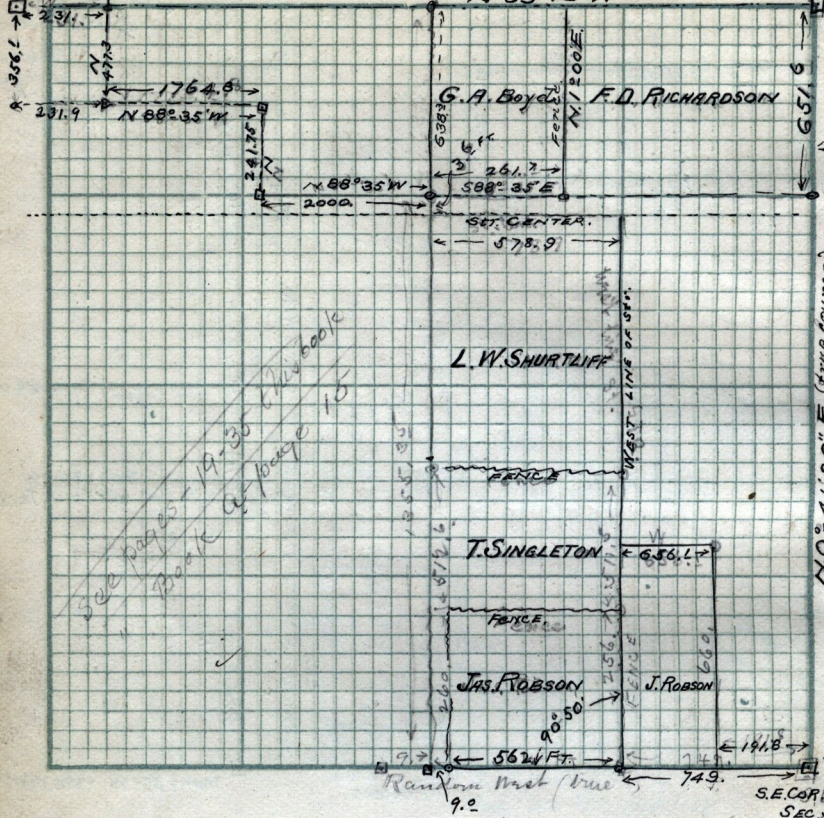
Stone  
County MONT.  
N<sup>o</sup> 39

115.5 ft. N. 0° 27' E. of pt 3.50 ch E. of Sec

total dist along B. line Sec 33 = 5315.05 FT.  
N 89° 10' W

N.W. COR SEC 33

BE  
N 55° 20' E  
N.E. COR  
SEC. 33  
T-7-N-2



See pages 19-30 of book  
Book of page 15

N 0° 41' 20\" E (true course)  
2640.8 FT

Scale: ..... Chains per inch.

Nov DEC. 26 - 1890. Survey of Plain City for James Rolson  
& others E 1/2 of N.E 1/4 Sec. 33 T-7-N-R-2-W.

The chaining was done by James  
Rolson and F. D. Richardson.

Error in chaining